

BUILDING COMMUNITY

2024-2025
ANNUAL REPORT



Wayne County
**COMMUNITY
FOUNDATION**



TABLE OF CONTENTS

Letter to Our Community.....	1
By the Numbers.....	2
Friend of Philanthropy Award.....	4
Giving Your Way.....	6
New Funds at WCCF.....	7
Power of Endowment.....	8
Community Funds.....	9
Community Grants in Action.....	10
Investing in Our Future.....	13
Affiliate Funds.....	14
GIVE 365	
Wayne County Community Youth Foundation	
The Women’s Fund	
Scholarship Funds.....	18
Highlights.....	20
Pair-A-Douce Scholarship	
Smithville Village Parks Campaign	
Chippewa Athletic Facilities Campaign	
Richard & Marguerite Wagner	
Legacy Giving.....	24
Financial Stewardship.....	27
Leadership.....	28



In an effort to conserve costs and the environment, various lists, noted throughout the report, are available online at www.wccfoh.org. If you prefer a printed copy of any of the reports, we would be happy to mail them to you. Just give us a call!

Letter to Our Community

Every strong community begins with a solid foundation. Over the past 47 years, your generosity has laid that foundation for Wayne County—a base of support and trust that allows us to keep building. This year, we began sketching the next chapter of our shared story, drawing a blueprint for the future that builds on the accomplishments of the past.

Honoring Our Friend of Philanthropy

Every great structure is strengthened by the people who support it, and this year we proudly recognize one such leader: *Mary Alice Streeter*, our **Ruth M. Tieche Friend of Philanthropy Award** recipient. Mary Alice has invested her time, talent, and treasure in countless organizations, causes, and capital campaigns across Wayne County. A Certified Public Accountant by trade, her expertise helped to guide the Foundation for more than 30 years, including 19 years as Treasurer. Her dedication and humility are cornerstones of the philanthropic spirit that holds our community together.



Investing in a New Home

After nearly five decades of renting office space, we were able to purchase a building of our own in June – the former Larry’s Music Center in downtown Wooster. Just as blueprints bring new life to old spaces, this investment will revitalize a well-known landmark while creating room for gatherings, meetings, community collaboration, and future growth. It’s more than just a building; it will be a home designed to welcome you into your community foundation.



Celebrating Growth and Impact

The measurements on our blueprint tell a story of progress:

- More than **\$1 million in scholarships** awarded to Wayne County students for the upcoming school year.
- Over **\$156 million in total assets**, growing from \$137 million last year.

These milestones reflect the Foundation we have built together over nearly fifty years. With your continued support, we can keep expanding the blueprint—designing new opportunities, strengthening connections, and constructing a future where generosity shapes every corner of Wayne County.

Thank you for providing the strong foundation. Together, let’s keep building.

With heartfelt appreciation,

A handwritten signature in dark ink, appearing to read "Brent Steiner".

Brent Steiner
President, Board of Trustees

A handwritten signature in dark ink, appearing to read "Melanie R. Garcia".

Melanie Reusser Garcia
Executive Director



GIVE

You give to a new or existing fund and receive a tax deduction when it makes sense for you.



GROW

We grow your charitable assets through effective investment management strategies.



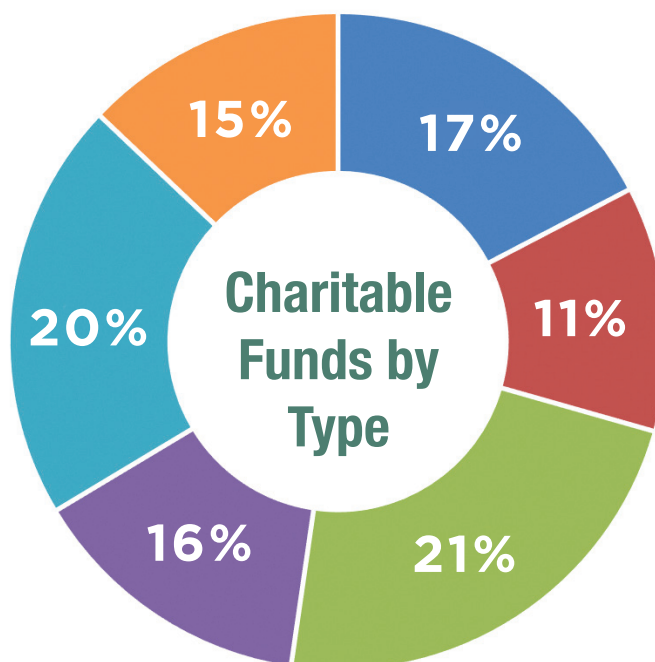
GRANT

Together, we grant money to area nonprofits to improve the quality of life in our community.

By the Numbers

FOR FISCAL YEAR 2024-2025

\$156,431,193
in Total Assets
as of June 30, 2025



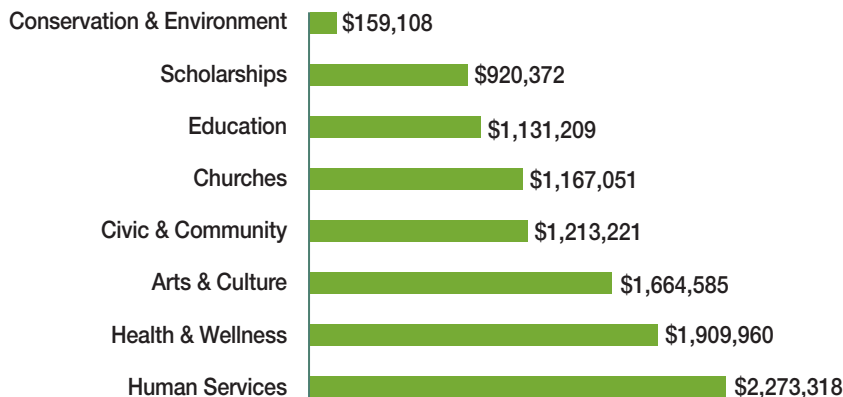
- Community Funds
- Field of Interest Funds
- Designated Funds
- Donor or Corporate Advised Funds
- Scholarship Funds
- Agency Funds

599
Charitable
Funds

\$8.6 Million
in Contributions
Received

\$10.4 Million
in Grants and Scholarships Awarded
in Fiscal Year 2024-2025

Grants Awarded by Area



\$124+ Million
Awarded in Grants and
Scholarships Since Inception

VISION

To effectively leverage
Wayne County's
philanthropic resources to
improve the quality of life
in our community.



MISSION

To provide philanthropic
leadership to our
community.



GOALS

To encourage individuals,
organizations, and
businesses to share part
of their resources for the
good of our community.

To assist community
charitable organizations
in the creation and
management of
endowments.

To provide oversight
of investment and
disbursement of funds
devoted to charitable
purposes.



RUTH M. TIECHE FRIEND OF PHILANTHROPY AWARD

Mary Alice Streeter

For decades, Mary Alice Streeter has embodied the spirit of service, generosity, and unwavering commitment to the betterment of Wayne County, Ohio. Through her quiet leadership and steadfast dedication, she has helped shape a stronger, more compassionate community. Her impact spans countless organizations and causes, always driven by a deep desire to uplift others and create lasting positive change.

Mary Alice's relationship with the Wayne County Community Foundation (WCCF) stands as a cornerstone of her philanthropic legacy. First elected to the Board of Trustees in 1991, she served with distinction for 33 years. Over the course of her tenure, she held key leadership positions including Vice President and, notably, served as Treasurer for 19 years. In 2024, the Foundation honored her lifetime of service by naming her an Emeritus Trustee—a title that reflects both her historic contributions and her continued influence on the organization's work. Her thoughtful guidance helped shape the Foundation's growth and cement its mission of strengthening the community through strategic giving.

But her commitment to service extends far beyond her work with WCCF. Mary Alice has lent her time and leadership to more than 20 local organizations, including Ohio's Hospice LifeCare, OneEighty, Inc., The Salvation Army, Viola Startzman Clinic, and the Wooster Community Hospital Board of Governors. She has played a pivotal role in some of the most significant capital fundraising efforts in the region. As co-chair, she helped lead campaigns for Ohio's Hospice LifeCare (1993), Viola Startzman Clinic (1995), The Salvation Army Family Life Center (2000), Goodwill Industries (2002), and the Wayne County Public Library (2005). In each endeavor, her motivation remained the same: to ensure that essential services and opportunities would be available for future generations.

Her involvement is never ceremonial. Mary Alice approaches every board seat, committee role, and campaign with genuine care and vision. Whether advocating for victims of domestic violence, expanding access to healthcare, or helping preserve and revitalize vital community institutions, her work has left a lasting mark on Wayne County. Her legacy isn't confined to formal titles or plaques—it lives in the people and programs her efforts have supported.



RUTH M. TIECHE

The Friend of Philanthropy Award is named in honor of Ruth M. Tieche. Ruth worked at Freedlander's Department Store for nearly 60 years, retiring in 1975 as the personnel director. She passed away in March 1989, at the age of 90, leaving no survivors. Through a bequest, Ruth left \$384,000 to the Foundation as an unrestricted gift.

Ruth's generosity brought the total assets under the care of the Foundation to more than \$1 million – a major milestone for the young organization. With careful stewardship, her initial gift has continued to grow while also awarding funds back into the community through the Foundation's competitive grant cycle. Unrestricted gifts, like the one provided by Ruth, allow the Foundation to meet the ever-changing needs of our community for years to come.

While Mary Alice has never sought attention or praise, her leadership has not gone unnoticed. She is a recipient of both the Women of Achievement Award and the Athena Award, and in 2021 was inducted into the Wooster Area Chamber of Commerce Wall of Fame. In accepting that honor, she humbly stated, "I'm honored, humbled, and grateful," emphasizing that her volunteer efforts have been personally rewarding and fueled by the relationships she's built along the way.

Mary Alice believes deeply in the power of collective action. Through her leadership, she's helped build a culture of philanthropy rooted in sustainability and equity. Her legacy is etched in lives uplifted, futures secured, and a community forever strengthened.

Those who know Mary Alice speak of her warmth, generosity, and quiet commitment to helping others. She's the kind of person who instinctively redirects praise, preferring to highlight the work of others and the causes she believes in. Yet, her deep impact is undeniable. Through years of selfless service, Mary Alice has demonstrated how one person's dedication can ripple outward to create lasting change. Her life's work exemplifies what it means to be a friend of philanthropy in the truest sense.

Previous Award Recipients

Stanley C. & Flo K. Gault, 2013

The J.M. Smucker Family, 2014

The Donald & Alice Noble Family, 2015

Greg & Kathy Long, 2016

Barry Romich, 2017

Stephen & Cheryl Shapiro, 2018

Michael & Stephanie Reardon, 2019

Richard & Judy Seaman, 2022

John C. Johnston III, 2023

Ron & Prue Holtman, 2024

**No recipients in 2020 or 2021 due to COVID-19 pandemic*

The Friend of Philanthropy Award was created to honor those who make a difference in our communities with their philanthropic activities – the giving of treasure, time, and talent – for the betterment of the Wayne County area. It is presented at Wayne County Community Foundation's Annual Dinner. For more details on the award and nomination process, please visit us online at www.wccfoh.org or call 330.262.3877.



Giving Your Way

Flexible options to fit your needs

For individuals, families, or organizations that want a strategic and simple approach to their long-term philanthropic giving, a charitable fund at Wayne County Community Foundation is a smart choice. These funds offer flexibility for donors, allowing them to choose their level of involvement.

With a variety of fund types, Wayne County Community Foundation has a solution to fulfill nearly every donor's charitable wishes. You can get started by meeting with our staff to discuss the fund options that best fit your goals.

WHAT IS YOUR GOAL?



Invest in the future of Wayne County.

Giving to a **Community Fund** provides the most flexibility to respond to the changing needs in our community, now and forever.



Strengthen a particular community or specific area of interest.

A **Field of Interest Fund** directs grants for a specific purpose—such as supporting disadvantaged children, literacy, the performing arts, or your hometown.



Support a specific charitable organization.

By establishing a **Designated Fund**, you can provide annual grants in perpetuity for one or more organizations of your choice.



Enable students to realize their educational dreams.

A **Scholarship Fund** enables you to support our local students with scholarships to pursue post-secondary education.



Actively participate as a grantmaker.

With a **Donor** or **Corporate Advised Fund**, you can actively participate by recommending grants to the causes you care about most.



Build an endowment for your nonprofit.

Charitable organizations can establish **Agency Funds** to benefit their mission now and in the future.

GETTING STARTED IS EASY

The choice is yours! Establish a fund today so you can witness its impact during your lifetime, or give through a bequest or other planned gift.

We are able to accept a variety of gifts – cash, stocks and bonds, life insurance, IRA distributions, or even gifts by bequest – to create a named fund that fits your needs. Most funds may be opened with a minimum gift of \$10,000; to open a new scholarship fund, the minimum is \$20,000. Each of our fund types may begin as an Acorn Fund, allowing for it to be funded on an installment basis over 5 years.

Our professional staff is ready to meet with you to talk about your goals, and create a plan that matches your charitable interests and financial situation. Whatever your philanthropic objectives, we have the flexibility and tools to help you reach them. To learn more about establishing your fund at Wayne County Community Foundation, please call 330.262.3877 or email contact@wccfoh.org.

New Funds

Each charitable fund created through Wayne County Community Foundation is unique and begins with a passionate donor with a personal story. This fiscal year, 27 new funds were established.

COMMUNITY FUNDS

Ansel Family Community Fund

FIELD OF INTEREST FUNDS

Richard S. and Marguerite M. Wagner Fund

DONOR OR CORPORATE ADVISED FUNDS

Jon and Tina Ansel Altruist Fund

Baker Family Fund

Kathie and Billy Clyde Fund

Don and Dee Nelson Continuation Fund

Norman and Linda Ream Charitable Fund

R J S Heritage Fund

Mike and Peggy Schmitz Family Fund

**One Donor Advised Fund wishes to remain anonymous*

DESIGNATED FUNDS

Jean H. Baird Memorial Fund for the Arts

Chippewa Athletic Facility Improvement Fund

Lowell Alva Frantz "Shining Apple Award" Fund

Kingsway Christian School Missions Endowment Fund

Nick Amster, Inc. Fund in Memory of Peggy Kramer

John E. Palmquist Memorial Fund

Dale and Donna Shamp Charitable Fund

Smithville Village Parks Fund

Wayne County Public Library Rittman Branch

Permanent Endowment Fund

Stan and Carol Wirt Fund for Wooster Township Fire and Rescue Association

AGENCY FUNDS

OHuddle Endowment Fund

People to People Ministries Vehicle Repair Fund

Rittman Historical Society Fund

YMCA of Wayne County Fund

SCHOLARSHIP FUNDS

Floretta Burge and Floyd & Mildred Gwin Memorial Scholarship Fund

Lowell and Marilyn Frantz Family Music Scholarship Fund

Pair-A-Douce Scholarship Fund



For a full list of funds, scan the QR code or visit us online at www.wccfoh.org.



START YOUR FUND IN THREE EASY STEPS



CHOOSE YOUR PASSION

We'll help you determine the best fund type to support your charitable interests. Your fund can impact a particular organization, field of interest, or emerging community needs.



CHOOSE WHEN TO GIVE

Decide if you prefer to establish a fund today, so you can witness its impact during your lifetime, or if giving through a bequest or other planned giving option is best for you.



CHOOSE WHAT TO GIVE

WCCF is able to accept a variety of gifts – cash, stocks and bonds, life insurance, IRA distributions, or even gifts by bequest. We will work with you and your professional advisor to determine how best to achieve your charitable and financial goals.

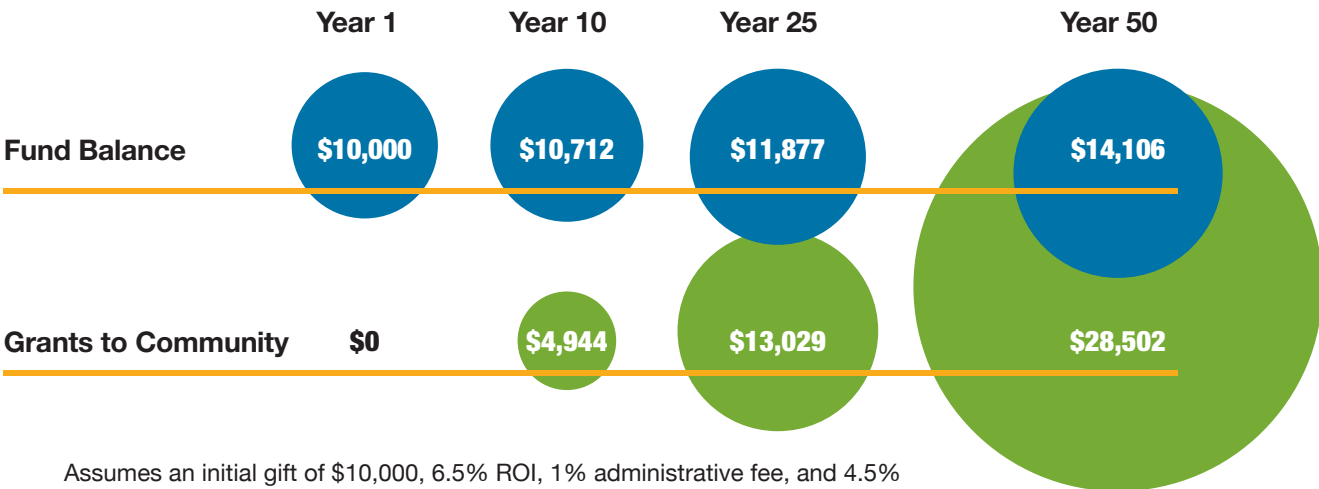


Power of Endowment

Supporting your community for generations to come

We understand the power of permanence. We believe it is the key to ensuring that our community's future will be even brighter than its past. When you create a charitable fund through the Foundation, you can benefit the community forever with a permanent endowment.

The graphic below shows that your endowment gift will grow over time, while still providing grants to the causes you care about most.



Assumes an initial gift of \$10,000, 6.5% ROI, 1% administrative fee, and 4.5% grant payout each year. This example is not a guarantee of return on investment.

Community Funds

Addressing needs today and tomorrow

Since our founding in 1978, visionary donors have been making gifts and creating funds to address the community's most pressing needs. Community Funds are unrestricted – meaning that Wayne County Community Foundation has the flexibility to address ever-changing community issues, including future needs that may not be evident yet.

The Foundation's Trustees evaluate all aspects of community well-being such as arts and culture, education, environment, health and wellness, human services, and more. Unrestricted gifts empower us to strategically distribute grants, when and where the need and opportunity are greatest.

If you want to help Wayne County and its residents thrive while maximizing the impact of your charitable contributions, a Community Fund is the ideal choice.

WHAT ARE THE BENEFITS OF A COMMUNITY FUND?

Establishing an unrestricted fund is the ultimate way to support the community you love.

- Your money stays in your community and is used to make grants, when and where they are needed most.
- You may initiate your fund with a gift today, or through a bequest.
- You, or others, can add to the fund you have established at any time, receiving tax benefits with each new gift.
- It is a long-term fund created for long-term impact.
- It is flexible to address current and future needs and opportunities.



Community Funds put the full power of the Foundation to work for you! Created by generous, civic-minded individuals like **Jon and Tina Ansel**, they are a primary source of grants to address the emerging needs in the community. By establishing the permanently endowed **Ansel Family Community Fund**, they enable the Foundation's Board of Trustees to fuel big ideas, strengthen vulnerable populations, and improve the entire community during their lifetime and for generations to come.



Community Grants in Action

\$798,664.73 awarded to 36 area nonprofit organizations through the Foundation's Competitive Community Grants.

American Heart Association, Inc. to address chronic disease management of hypertension by providing access to blood pressure monitoring equipment and education through partnerships with YMCA of Wayne County and Wayne County Public Library.

American Red Cross to provide critical relief and recovery services to Wayne County disaster survivors, as well as provide residents with lifesaving home fire preparedness tools, including free smoke alarms.

ANIA Ice Inc. to replace the flooring in the Alice Noble Ice Arena lobby and rink apron areas. The current flooring was worn, damaged, and no longer met safety standards.

Apostolic Christian Home Inc. to be used toward the cost of a backup generator, an integral piece of life safety equipment in the event of a power outage, ensuring power for alarm systems, consistent heating and cooling, kitchen operation, and support of resident care for their Aspen Square addition, a 48-bed assisted living area.

Catholic Charities for support of their new Rise Above program, a merger and re-envisioning of two existing group programs for at-risk youth in Wayne County and their parents.

City of Orrville to purchase equipment for both the Orrville Police Department and the Orrville Fire Department, including drones to assist with search and rescue missions and surveillance support, and new Rescue Struts, which are used to stabilize vehicles involved in accidents.

Crown Hill Manor to replace 25-year old plumbing throughout the building that causes costly emergency repairs. Located in Rittman, Crown Hill Manor provides housing and services for older adults and persons of lower income from Rittman and surrounding areas of Wayne County.

Girls on the Run East Central Ohio to purchase brand-new running shoes and sports bras to be given to participants in their program who cannot afford these essential items.

Green Local Schools to purchase and install a sun shade structure for the Green Elementary School playground. Previously, lack of adequate shade resulted in limited playtime and constrained outdoor classroom activities.

Healthcare 2000 DBA The Viola Startzman Clinic to help defray the costs of disposable dental supplies used by their Dental Clinic for which they do not receive reimbursement from Medicaid.

Heartland Education Community to support the Heartland Education Community (HEC) initiatives that benefit the youth and staff of Orrville City Schools.

IncludeAbility to purchase evacuation chairs for Smithville, Dalton and Northwestern school districts, to help safely evacuate students with disabilities in the event of an emergency when elevators cannot be used.

Interlink Ministries Inc. for their Food Fellowship Ministry program to purchase food (emphasizing produce and other staple items) due to the shortage and quality of free food available at local food banks.

Izaak Walton League of America, Wayne County Chapter to support renovations that will make their Clubhouse accessible for individuals with disabilities attending their public events.

Joyful Enterprises, Inc. to purchase an electronic menu board for the Joyful Café, which will enable the menu to change daily or as needed.

Kidney Foundation of Ohio to provide direct dollars to kidney patients with financial need to pay for prescription medications and nutritional supplements, transportation costs, and emergency necessities relating to health care.

The **National Inventors Hall of Fame** is dedicated to inspiring positive change by honoring inventors, encouraging creativity, and cultivating innovation and entrepreneurship. One of its flagship programs, **Camp Invention**, is a week-long summer experience for children in grades K–6. Through hands-on challenges and open-ended activities, campers explore STEM concepts, build teamwork skills, and turn their bold ideas into real-world innovations—all while having fun and fueling their curiosity.



Kidron Community Historical Society to equip the Gerber-Nussbaum Barn with handicap-accessible restrooms and a warm up kitchen. Once completed, the barn can be used as a community space for gatherings, concerts, weddings, and educational purposes.

Milton Township/Wayne County to purchase six Automated External Defibrillators (AEDs) so that volunteer first responders have them available in their vehicles when arriving on scene first to provide life-saving care to someone in cardiac arrest. The funding will also allow for the replacement of outdated AEDs currently in use on the township's fire trucks.

National Inventors Hall of Fame, Inc. to support Camp Invention registration costs for underserved Wayne County children during Summer 2025. Delivered in partnership with Wayne County schools, Camp Invention brings STEM education to life for children in grades K-6 with curricula focused on hands-on, creative problem-solving activities, inspiring children to be curious about their world.

New Destiny Treatment Center to upgrade dorm rooms where inpatient clients live and sleep after business hours for better therapeutic comfort, quality, and safety.

Newbridge Place to provide housing for Wayne County veterans—typically referred by the VA—who have limited incomes and have been diagnosed with serious mental health disorders that prevent them from living independently, placing them at risk of homelessness.

Ohio's Hospice LifeCare for improvements to the Gault Inpatient Unit including the purchase of a new bath trolley; the construction of an outdoor pavilion for patients, family members, and children's grief campers; and the renovation of the kitchenette.

OHuddle to expand services to three new Elementary Mentorship Sites in Rittman, Green (Smithville), and Waynedale through GrOHuddle, a partnership with the University of Akron that matches junior and senior high school students with elementary mentees to expand services to the elementary school population without compromising the finite number of volunteer mentors available in a geographic region.

Orrville Area Boys & Girls Club to purchase equipment for their Maker Space program area.

Pee Wee Hollow, Inc. to build two pavilions to provide group shelter; construct signage with the Pee Wee Hollow map, camp information, and rules; renovate an existing storage shed; and repair the camp road that has deteriorated on both sides of the bridge that crosses a creek.

People to People Ministries to help fill in the gaps for Christmas gifts for teens and the 6-11 age group, including blankets, books, STEAM activities, and gift cards. Each family also receives books, a puzzle and a family game as part of their Christmas Project.

The Salvation Army to support the purchase of new furniture within the shelter. This includes refurbishing each room with beds, mattresses, and storage, as well as installing TVs for entertainment in common areas.

Shreve Presbyterian Church for needed kitchen repairs due to flooding from a heavy rainstorm in 2023. The kitchen is a vital part of their outreach to the community, hosting the Tri-County PreSchool, monthly community meals, a yearly Back Pack Program, Christmas Joy Program, Alcoholic Anonymous meetings and Wayne County Historical Society meetings.

Smithville Community Historical Society for their Capital Fund, which supports the maintenance, upgrade and restoration of the thirteen historic buildings owned by the Smithville Community Historical Society.

Wooster Youth Shakespeare is a community-based youth theater education program where students ages 9–19 bring Shakespeare’s full-length plays to life on stage. Through performance, they discover their voice, passion, and personal power. With a low participation fee and scholarships available, WYS welcomes actors of all backgrounds, abilities, and experience levels. No auditions—everyone who signs up gets a role.



Society for Handicapped Citizens of Medina County Inc. (DBA The Society) to purchase craft items, sensory items, and a carpet cleaner to benefit individuals with intellectual and developmental disabilities in their Link-Wayne Day Program. The Link-Wayne Program, located on Cleveland Rd. in Wooster, serves adults with disabilities, providing enrichment activities like community outings.

The University of Akron - Wayne College to acquire essential nursing and lab equipment at Wayne College to support the new Associate Degree in Nursing (ADN) program and the growing demand for nurses. ADN students focus intensively on clinical skills and hands-on nursing practice. They require dedicated nursing simulation labs, practice spaces, and specialized equipment such as patient simulators, IV pumps, and anatomical models to develop their skills.

VANTAGE Aging to support at least 500 nutritious, home-delivered meals for Wayne County seniors through Meals on Wheels of Northeast Ohio. This grant covers a portion of the 6,818 meals they expect to deliver to seniors in Wayne County through this project. They provide homebound seniors and individuals with disabilities nutritious, home-delivered meals and daily wellness checks.

Village of Smithville to install two pickleball courts in Smithville Village Park, with fencing surrounding them and lighting on either side.

Wayne Center for the Arts to provide essential electrical upgrades to Wayne Center for the Arts’ historic building. The current, outdated electrical system is unable to support the wattage demands of modern equipment, posing safety risks and operational limitations.

Wooster Community Hospital to help purchase twenty new Emergency Department patient stretchers/beds to enhance patient safety, comfort, and mobility while reducing the risk of injury to patients and caregivers. Such advanced new beds will be especially helpful in expediting care for stroke or heart attack patients, or when addressing other critical patient illnesses and injuries.

Wooster Youth Shakespeare to provide WooShakes scholarships to children from economically disadvantaged families in Wayne County, so they may participate in the program.

The Associate Degree in Nursing (ADN) program at **The University of Akron - Wayne College** provides students with the foundational knowledge and hands-on, skills-based training needed to become a registered nurse (RN).





Investing in Our Future

New Home for WCCF

After nearly 50 years of supporting capital projects for organizations throughout Wayne County, the Wayne County Community Foundation is proud to announce a capital project of our own. In June 2025, the Foundation finalized the purchase of a building located at 302 E. Liberty Street in downtown Wooster—formerly home to Larry’s Music Center—which will become our permanent headquarters. Renovations are set to be completed by July 2026.

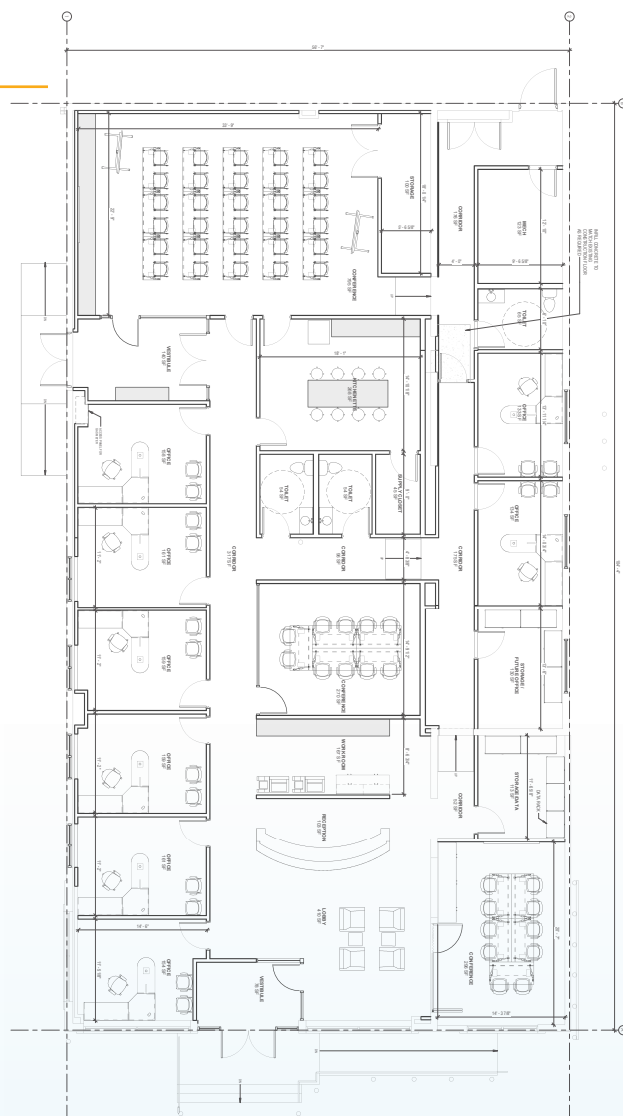
As the Foundation looks toward future growth and long-term impact, the Board of Trustees recognized the importance of transitioning from a tenant to a property owner. This move not only strengthens our financial portfolio but also enhances the Foundation’s long-term sustainability—allowing us to better serve Wayne County today and for generations to come.

Following a careful evaluation of organizational needs and available properties, the former Larry’s Music building stood out for its high visibility, capacity for future expansion, and central location near many of our nonprofit partners.

Since our founding in 1978, the Foundation has been dedicated to strengthening our community, awarding more than \$124 million in grants and scholarships across Wayne County. Throughout that time, we’ve maintained a lean staff and operated on a conservative budget—deliberately setting aside resources to support long-term goals like this. Thanks to this careful planning, we can complete the building purchase and renovations without incurring debt.

While the impact of our grantmaking isn’t always visible, this building will serve as a lasting symbol of our mission and values. We believe our new presence in downtown Wooster will help deepen relationships with donors and nonprofit partners alike.

This investment in real estate is more than a sound financial decision—it’s a meaningful commitment to our community’s future. We look forward to welcoming you to our new home soon!



**Proposed floor plan and exterior design only. May change prior to renovation.*

2024-2025 GIVE 365 MEMBERS

Patty Alioto	Joy Kleinhenz
Betty Aylsworth	Joe & Elizabeth Knutson
Charles & Sarah Baker	Brett & Renee Lanz
Wayne & Pat Bare	Rebecca Lauffenburger
Terry & Mary Ann Bauman	Joe & Sue Min Lee*
Dave & Melnee Benfield	Ryan & Tiffany Leeper
Matthew & Johnathan Benko-Scruggs	Mimi Lewellen
Robert & Joyce Blanchard*	Matt Long & Lynette Mattson*
Brian & Amy Bogner	Pat & Suzi Lorson
Mike & Kelli Bogner	Mike & Connie Mann
Nancy Bogner	Phil & Bernadette Mariola
Brian & Olivia Boyer	Karrie McAllister
Scott & Susan Boyes*	Ryan McAllister
Adam & Vikki Briggs*	Beverly McCoy
Marty & Denise Broda	Ed & Carol McKiernan
Laurie Buehler*	Julie Mennes*
Maribeth Burns	Clyde & Kathy Miller
Sonny & Jill Carmichael	Constance Miller
Sara Cassady & James Cassady	Lynn Moomaw*
Wanda Christopher-Finn	Becky Moore
Billy & Kathie Clyde	Lacie Neal & Robert Ortoft
Sandra Corbacioglu	Pat & Patty Neyhart
Marian Cropp	Dave & Sharron Nielsen*
Paul & Ruth Crowley	Brigid O'Connor
James & Christine Davis*	Cyril Ofori & Amelia Laing*
Jim & Donna Dale Davis*	Sara Patton*
Andra Del Propost	April Pesicek
David Del Propost	Ferenc & Candy Relle
Mark & Patty Del Propost	Dennis & Lisa Reusser*
Bobbi Douglas	Sam Reusser*
Joanne Downs	Marcia Richard
Edward & Mary Eberhart*	Edwin & Betty Rider
Glenda Lehman Ervin*	Shelly Rider
John & LeeAnn Eyre	Bob & Karen Rodda
Annette Fejes*	Jack & Nicholette Rogers
Richard & Susan Figge	Mary Schantz
James Fox & Stephanie Strand	Dave & Sandy Schmidt
John & Helen Fravel	Troy & Alison Schmidt
Barb Friedhoff	Betty Schuler
Dave Gallapoo	Gregory Shaya
Stefan & Melanie Garcia	Josephine Shaya
Jim & Lana Gesler	Jake & Teeka Sheets
Dick & Patty Glessner	Daphne Silchuk-Ashcraft
Andrew & Kara Good	Lee Simpson
Eileen Good	Melody Lawrence Snure
Mark & Diane Gordon	Carol Stewart
Bob & Peggy Gralinski	Mary Stockton & Jeff Perkins
Russ & Katherine Grant	Mary Alice Streeter*
Tom & Catherine Graves	Tim & LuAnn Suppes
Joel Gray	Robert & Jaimie Tangen
Pearl Grosjean	Kevin Trent & Marcia Lehman Trent*
MacKenzie Haiss	Cindy Vaughn
Dianne Hange	Bala Venkataraman*
Dwaine & Joi Hemphill	Clint & Deanna Walenciak
Mary Beth Henthorne	J. Matthew Wickham
Connie Hodgdon	Jill Wickham
Kurt & Gina Holmes	Jerry & Tiffany Witmer
Joel & Carrie Horst	Deb Zeiters & Richard Maxwell
Linda Houston	
Mike & Diane Jarrett*	
Jon & Carrie Jones	
Wyn Jones	

**Indicates Life Membership*

GIVE 365 Wayne County

Philanthropy on a dollar-a-day

GIVE 365 unites emerging philanthropists in Wayne County, Ohio, empowering them to pool their resources for a shared cause.

By contributing just \$1 a day, or \$365 annually, members of GIVE 365 amplify their philanthropic contributions while gaining insight into our community's challenges and opportunities. This initiative also provides nonprofit organizations addressing these issues with a platform to showcase their effectiveness and potential to members.

This year's grant-making focus for the Wayne County Community Foundation's GIVE 365 program was "Community Wellness and Success: Creating a supportive environment where everyone can flourish together." After reviewing grant applications, the group voted to award a total of \$26,500 to five nonprofit organizations:

Boys & Girls Club of Wooster received \$2,500 for Healthy for Me, a program enhancement of Project CHOP, an interactive nutrition and food education program that integrates hands-on learning experiences, empowering youth to engage directly with local farmers, learn about food sourcing, and participate in guided cooking sessions.

Friendship Meals, Inc. was awarded \$2,000 to purchase food and to-go containers for the nutritious meals they provide to those in need in the Orrville community.

Healthcare 2000 DBA The Viola Startzman Clinic received \$12,500 to provide greater access to psychiatric mental health care to rural residents and families, allowing community health workers to build relationships, increase awareness, and provide mental and primary health care through telehealth services or in-person visits.

OHuddle Incorporated was granted \$6,000 to expand services to three new Elementary Mentorship Sites in Rittman, Green (Smithville), and Waynedale through GrOHuddle, a partnership with the University of Akron matching junior and senior high school students with elementary mentees.

The Counseling Center of Wayne and Holmes Counties received a \$3,500 grant to enhance its Day Treatment services with telehealth capabilities, allowing clients to access mental health care remotely when they are unable to attend in person due to weather or other barriers.



Staff at The Viola Startzman Clinic demonstrate the telehealth service used to reach more clients throughout Wayne County.

HOW DO I BECOME A PART OF GIVE 365?

It's simple!

Contact the Foundation at 330.262.3877 or visit us online at www.wccfoh.org to complete the membership card.



Wayne County Community Youth Foundation

An affiliate fund of Wayne County Community Foundation

Philanthropists in the making

The Wayne County Community Youth Foundation (WCCYF) offers high school students across Wayne County a unique chance to explore the impact of philanthropy. This year, 26 students from seven local high schools gained hands-on leadership experience while deepening their understanding of charitable giving and how investments help grow philanthropic funds.

The program emphasizes the core principles of community-based philanthropy, including fundraising and grantmaking to support projects that benefit Wayne County youth. In addition to these activities, Youth Foundation members hone their teamwork, leadership, and communication skills, and engage in community service projects that enhance the quality of life throughout Wayne County.

This year, after evaluating grant applications, WCCYF student advisors voted to award \$20,300 in grants to eight organizations serving youth in Wayne County.

Anazao Community Partners received a \$5,000 grant to support Good Friend Toolkits, facilitator expenses, promotional materials, and student training to empower youth as positive mental health influencers.

Catholic Charities received a \$500 grant to create a home visit kit with crafts and other adaptive resources, improving the quality and effectiveness of the respite care and teaching experience for youth with developmental disabilities.

Orrville Area United Way received a \$1,000 grant to purchase supplies and materials to build beds for children in Dalton, Kidron, Marshallville, North Lawrence, and Orrville who lack proper sleeping arrangements.

People to People Ministries received a \$2,000 grant to buy Christmas presents for youth from low income families, including Legos, STEM toys, art sets, Nerf guns, pajamas, basketballs, sports equipment and popular books.

Stirrup Courage received a \$800 grant to add carts and harness equipment to fit various sizes of equine to their program, in order to broaden accessibility for differently abled children and youth to participate in the horse-riding programs.

United Way of Wayne and Holmes Counties, Inc. received a \$1,000 grant for Reading Under the Lights to purchase books that children can choose and keep, helping them maintain their reading skills throughout the summer break.

Wooster Community Hospital Foundation received a \$5,000 grant to promote infant safety by ensuring new mothers receive safe sleep education from nursing staff and pediatricians, and to provide and encourage the use of "sleep sacks (pajamas)" at home for their babies.

YMCA of Wayne County received a \$5,000 grant to provide 4- and 5-year old children at the "Y Academy for Brighter Futures" (childcare center) with access to enriching activities and experiences they might not otherwise have.



AFFILIATE FUNDS

2024-2025 WAYNE COUNTY YOUTH FOUNDATION MEMBERS

Madison Beltz, Rittman
Karizma Brinker,
Northwestern/WCSCC
Melia Brown, Wooster
James Cassidy, Northwestern
(John) Jaden Clay, Wooster
Amelia Correll, Wooster
Jiawei Ge, Wooster
Elli Gordon, Wooster
Abigail Grimwood, Wooster
Sara Lewellen, Wooster
Isabelle Mazzaresse, Norwayne
Annie McAllister, Orrville
Sofia Morgret, Smithville
(Addilynn) Addi Musser, Wooster
Liam Ozar, Wooster
Henry Pozefsky, Wooster
Saxon Ranney, Wooster
(Ferenc) Calen Relle, Wooster
Brooke Ritchie, Wooster
Mason Shutt, Smithville
Kellen Smith, Wooster
Jason Veon, Norwayne/WCSCC
Dane Vodika, Orrville
Gracie Watkins, Norwayne
Parker Widmer, Norwayne
Madeline Wolf, Norwayne
Trevor Dunlap, WCCYF Advisor

During a presentation from Central American Medical Outreach (CAMO), founder Kathy Tscheigg challenged Youth Foundation Student Advisors to solve a heartbreaking problem she faced in her early days as a Peace Corps nurse in Honduras: how to save multiple patients with one oxygen tank and limited masks and tubing. A hands-on lesson in resourcefulness and making do with limited resources under pressure!

THE WOMEN'S FUND ADVISORY COMMITTEE

Pat Bare
Maribeth Burns
Marian Cropp
Christine Davis
Glenda Lehman Ervin
Madeline Fuller
Cheryl Goff
Diane Gordon
Prue Holtman
Carrie Horst
Kristin Hranko
Sandra Hull
Kathy Long
Carrie McCoy
Gayle Noble
Sara Patton
Rachel Relle
Jenni Reusser
Peggy Schmitz
Judy Seaman
Cheryl Shapiro
Jody Starcher
Deanna Troutman
Yvonne Williams



An Affiliate Fund of the Wayne County Community Foundation

Changing lives – one woman at a time

Since 2013, **The Women's Fund (TWF)**—an affiliate fund of the Foundation—has been a powerful example of what can happen when women come together to support one another. Through collective giving, TWF brings together donors, grantees, and volunteers to champion programs that foster empowerment and self-sufficiency for women of all ages.

What began with just 20 women united by a shared mission—to make a difference in the lives of women in Wayne County—has grown into a permanent endowment of more than \$1 million. This lasting fund ensures ongoing support for initiatives that uplift women throughout the community.

Focusing on three key areas – education, economic empowerment, and health and wellness – the Fund makes grants to organizations that give women more opportunities to succeed. Since its inception, TWF has awarded 22 grants totaling \$242,671 to programs supporting women and children.

Empowering women in Wayne County

Through effective grantmaking, The Women's Fund has the potential to transform the lives of women for the better – improving their life circumstances and making a positive, lasting impact on their families and communities. This year, the Advisory Committee awarded a total of \$39,600 in grants to nonprofit organizations serving women and girls in Wayne County.

OneEighty, Inc. received a \$30,000 grant to support personnel costs needed to meet the growing demand for shelter staff, ensuring the safety and comprehensive care of human trafficking victims.

Wooster Community Hospital received a \$9,600 grant to support the hospital's continuing education efforts and the certification of its Women's Pavilion Labor and Delivery nurses.



The Women's Pavilion at Wooster Community Hospital offers exceptional Level II obstetric care, expertly managing complications before and after delivery to support families every step of the way. A grant from The Women's Fund helps ensure nursing staff stay at the forefront of best practices and innovative leadership.



Mother's Day Initiative

The **Mother's Day Initiative** invites everyone to celebrate the women who have made a lasting difference in their lives, while also fostering positive transformation in the lives of women and girls throughout Wayne County. This year, 240 women were honored or remembered on Mother's Day, adding \$17,350 to The Women's Fund permanent endowment. Donations to The Women's Fund will continue to generate funds for granting to nonprofit organizations serving Wayne County women and girls – for generations to come.

For a list of women honored and memorialized through this initiative, scan the QR code or visit us online at www.wccfoh.org.



Scholarship Funds

Empowering the next generation

Scholarship funds play a crucial role in enabling students to follow their educational dreams. Beyond supporting high school seniors, there is an increasing need to provide financial aid for individuals seeking to complete their college education, undergo re-training, or pursue advanced studies in specialized fields. Thanks to our generous donors, the Foundation awarded over \$1 million in scholarships to 366 individual recipients for the 2025-2026 academic year. Below are just a few of this year's recipients:



Eric Lehman
Smithville High School



Paige Pazicni
Norwayne High School



Teyacapan Perez
Wooster High School



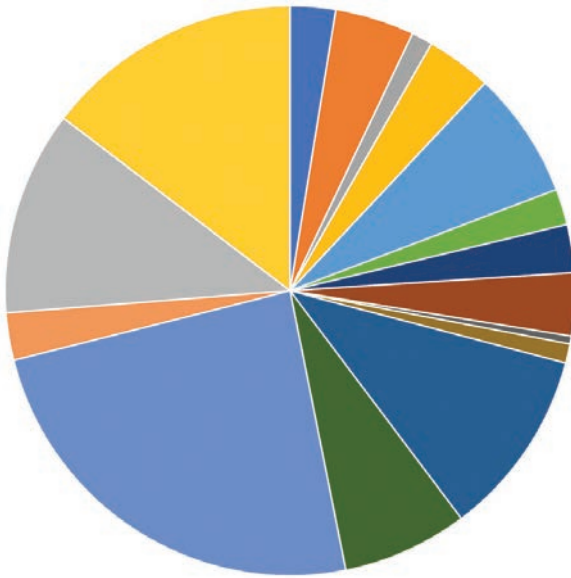
Mya Simmavanh
Orrville High School



Caleb Smith
Rittman High School

For a full list of scholarship recipients, scan the QR code or visit us online at www.wccfoh.org.





\$1,097,204

Total Scholarships Awarded for the 2025-2026 Academic Year

■ Chippewa High School Seniors	\$28,250
■ Dalton High School Seniors	\$49,300
■ Northwestern High School Seniors.	\$13,250
■ Norwayne High School Seniors	\$40,850
■ Orrville High School Seniors.	\$79,172
■ Rittman High School Seniors	\$22,460
■ Smithville High School Seniors.	\$29,931
■ Triway High School Seniors	\$39,000
■ Wayne County Schools Career Center Seniors	\$4,910
■ Waynedale High School Seniors.	\$11,931
■ Wooster High School Seniors.	\$116,881
■ College Students – New Awards.	\$78,200
■ College Students – Renewed	\$265,725
■ Other Students.	\$29,500
■ Graduate School Students	\$127,200
■ Non-Traditional Students	\$160,645
Total	\$1,097,204



BECOME A SCHOLARSHIP EVALUATOR!

Passionate about education and its power to transform lives? Consider becoming a Scholarship Evaluator and help shape the future of deserving students in our community.

As a Scholarship Evaluator, you bring your life experience, perspective, and local insight to the selection process. Most importantly, you add the human touch that ensures each decision honors the intent of donors who believe in the value of education.

Why Be a Scholarship Evaluator?

This volunteer role is more than reviewing applications—it's about investing in the next generation. Your participation can open doors for students, helping them achieve their dreams and contribute to a stronger, more vibrant community. By joining our team of dedicated evaluators, you play a key part in creating a brighter tomorrow for students and their families.

What's the Commitment?

Each evaluator is assigned about 30 student applications. The time commitment is approximately three to four hours during late March and early April. You'll review applications based on academics, leadership, extracurricular and community involvement, essays, financial need, and recommendations. Reviews are completed online, allowing you to work from any computer or mobile device at your own pace.

Interested in this meaningful opportunity?

Contact us at contact@wccfoh.org to join us in supporting education and empowering future leaders.



Pair-A-Douce Scholarship Supporting Career and Technical Education



Career and Technical Education (CTE) programs are essential in shaping today's workforce and preparing for the future. By offering hands-on, skills-focused training, these programs effectively bridge the gap between education and career opportunities, especially in trades that are crucial to the economy. Among the sectors benefiting from vocational education, the construction industry stands out due to its significant need for skilled workers. With a rising demand for labor and a shortage of qualified professionals, vocational schools are not merely beneficial—they are vital.

As the foundation of infrastructure development, the construction industry is responsible for building everything from homes and schools to roads, hospitals, and commercial spaces. However, despite its critical role, the sector continues to struggle with a persistent labor shortage. Reports indicate that each year, hundreds of thousands of construction jobs remain vacant due to a lack of trained workers. This skills gap poses a threat to project timelines, safety standards, and overall economic growth. CTE programs play a key role in solving this issue by providing specialized training in trades like carpentry, electrical work, plumbing, HVAC, masonry, and other construction-related fields.

Brothers Leonard and Robert (Bob) Douce are working to fill this gap. Raised on a Plain Township dairy farm west of Wooster, Ohio, the brothers learned the value of hard work.

A lifelong Wayne County resident, Leonard Douce discovered Habitat for Humanity when his son collaborated with the organization for a Future Farmers of America (FFA) project. Leonard began volunteering for the organization in 1999 – serving on the Board of Directors for 16 years and helping to start the Habitat ReStore. The 87-year old can still be found volunteering on site to build homes for families across Wayne County. He has participated in more than 80 builds, including the very first Habitat home built in Wayne County!

Bob Douce took a slightly different route. After college, he moved to Florida and began serving as a Career Specialist for a local high school. During his 35 years, he developed and became the director for the “BEAM” (Building, Engineering, Architecture and Manufacturing) Career Academy, working with over 2,200 students each year to determine their best career path. He also authored educational materials, including Academic and Career Portfolio Planners used by high schools, colleges, and national organizations across the country. In addition, Bob worked with companies to develop employee engagement strategies to enhance the company's strategic goals. In early 2024, Bob moved back to Wayne County and immediately began exploring ways he could help local students achieve their career goals.

Together, the brothers established the **Pair-A-Douce Scholarship Fund** at the Foundation to encourage students pursuing an education in the building and agricultural mechanical trades. The scholarship is open to current graduating seniors entering a vocational or two-year program in an applicable skilled trade. It is also open to non-traditional and adult students who enroll in a relevant field of study at Wayne County Schools Career Center or OSU-ATI.



Smithville Village Parks Campaign



The Village of Smithville Park is more than just a patch of green in the middle of town—it's where the heart of the community beats. It's where kids learn to swing a bat for the first time, families gather for sunny afternoon picnics, and neighbors catch up during morning walks. Simply put, Smithville Park is where memories are made.

After hearing from residents, the Smithville Citizens' Park Committee put together a shared vision for the park's future—one shaped by what the community truly wants to see. While the park has already seen big improvements like upgraded ball fields and newly paved walking paths, the Committee isn't done yet.

Partnering with Wayne County Community Foundation, the Committee established the **Smithville Village Parks Fund** to implement the next phase of the Park Capital Improvement Plan. A key part of this plan includes purchasing the former Green Elementary School property to be further developed into park space. Additional improvements include restrooms and pavilions, lights for Baseball Field #2, and a walking bridge across Sugar Creek to connect the hiking trails. Thanks to a \$50,000 grant from the **Beaverson Foundation Community Fund** at Wayne County Community Foundation, two pickleball courts will also be built.

One of the greatest gifts we can give our children is the chance to play outside—an experience that fosters health, curiosity, and a sense of adventure. And in return, children who grow up thriving become one of the greatest gifts to our community. Thanks to generous donors and public grants, the Committee is dedicated to building a park that captures Smithville's spirit, pride, and hopeful future.





Chippewa Athletic Facilities Campaign

Chippewa Local Schools is embarking on an ambitious project to elevate its athletic facilities, creating spaces that inspire student success, foster community pride, and honor the district's rich athletic tradition. The Athletic Facility Improvement Plan focuses on two centerpiece projects: Alumni Hall and the Chippewa Training Center.

Alumni Hall will celebrate Chippewa's storied athletic history while providing a welcoming space for current students, alumni, and the broader community. Plans include modern locker rooms, versatile meeting areas, and gathering spaces for school and community events. Designed for both comfort and function, the facility will give athletes a place to prepare for competition and unwind afterward, while also serving as a hub for alumni reunions, banquets, and district functions—strengthening bonds across generations.

The Chippewa Training Center will be a state-of-the-art training facility designed to support year-round athletic development. It will feature performance turf, weight-training rooms, and adaptable spaces for multiple sports. The center will provide athletes with the tools to reach their full potential and position Chippewa as a host for regional competitions—bringing visiting teams, spectators, and economic benefits to the community.

More than just new buildings, these projects represent an investment in the growth of Chippewa's students—athletically, academically, and socially. The facilities will help young people build strength, resilience, and leadership skills while reinforcing the district's values of teamwork and school spirit.

To bring this vision to life, the district has established the **Chippewa Athletic Facility Improvement Fund** at the Foundation to coordinate fundraising. This campaign invites participation from across the community, ensuring the upgrades are a shared achievement and a lasting legacy for future generations.

The Chippewa Local Schools athletic program has long been a source of pride, with student-athletes competing at high levels across many sports. By investing in Alumni Hall and the Chippewa Training Center, the district is taking a bold step to ensure that tradition thrives—providing world-class facilities that unite students, families, alumni, and local businesses in a shared commitment to excellence.



Richard “Dick” and Marguerite Wagner

A Legacy of Devotion and Generosity

Richard “Dick” and Marguerite Wagner were more than lifelong partners—they were pillars of service, generosity, and leadership in Orrville and throughout Wayne County. Their 64-year journey together was built on a foundation of shared faith, a love of learning, and a deep commitment to giving back.

Born just weeks apart in 1934 in Youngstown, Ohio, Dick and Marguerite met as young adults and married in 1957. Together, they raised three children and built lives of quiet purpose and meaningful impact.

Marguerite, a gifted educator, musician, and artist, taught for 30 years in the Orrville City School District and led the Adult Basic Literacy Program. She held a degree from Westminster College and was a tireless advocate for literacy and lifelong learning. A faithful member of Trinity United Methodist Church, she led countless Bible studies and poured her energy into nurturing others. Her creativity extended to the garden, where she used her Master Gardener expertise to design the landscaping for Every Woman’s House (now OneEighty, Inc.). In 1987, her many contributions were honored when she was named Orrville’s Paul Powell Citizen of the Year.

Dick’s career in law spanned nearly 60 years, marked by professionalism, precision, and a reputation for high standards. A graduate of The Ohio State University, he served the community through his work at Kropf Wagner Law Firm, LLP and as Orrville’s City Solicitor and Law Director for 12 years. His commitment to civic life included leadership in the Orrville Rotary Club, Jaycees, Orrville Chamber of Commerce, and as a longtime trustee of the Orrville Public Library. Perhaps most significantly, Dick was a founding member of the Wayne County Community Foundation, where he played a key role in securing charitable gifts and endowments that continue to benefit the Orrville area today.

Throughout their lives, Dick and Marguerite supported numerous causes, including Trinity United Methodist Church and the Orrville Area Boys & Girls Club. Whether leading, teaching, mentoring, or giving, they lived out their values with humility, consistency, and joy.

Although Marguerite passed away in 2022 and Dick in 2025, their legacy lives on through the [*Richard S. and Marguerite M. Wagner Fund*](#). Established through thoughtful planned giving, this Field of Interest Fund will support Orrville and neighboring communities for generations to come—a fitting tribute to a couple who quietly and persistently made their corner of the world better.



Leave a Legacy

The gift of a lifetime

More than great wealth, philanthropy requires a generosity of spirit and the desire to improve the quality of life for others. By carefully planning your estate, you can create benefits for yourself, your family and your community. With thoughtful preparation now, you can be assured your legacy gifts will be directed to the causes you care about most.

HOW CAN I LEAVE A LEGACY?



Leave a Bequest – Include the Foundation in your will as the beneficiary of assets you wish to donate. Committing a portion of your bequest this way removes the assets from your taxable estate. These gifts can be cash, stocks, bonds, or tangible property.



Retirement Funds and IRAs – Name the Foundation as the beneficiary of your IRA, 401(k), or 403(b) to avoid income and estate taxes upon your death. Continue to withdraw from your plan during your lifetime, then benefit your favorite causes with the remainder of the fund.



Life Insurance – Pay an annual premium for a new or existing life insurance policy and designate the Foundation as the primary or contingent beneficiary. You can also gift a life insurance policy you own and no longer need or make the Foundation the owner of a new policy for which you pay the annual premiums.

Our staff will work closely with you and your financial advisor to help facilitate the type of gift that is right for you. Contact us to learn more about the ways we can help you have a positive impact on the community and causes you cherish.

CAN I FOCUS MY PHILANTHROPY?

Absolutely yes! Because philanthropy is intensely personal, it's important to match your desire to give with a community need that “speaks to you.”

Your planned gift with WCCF can create a field of interest fund that will allow WCCF to give grants in the areas you are most passionate about – whether it is education, nature conservation, or the arts. Or you can design a designated fund that will benefit one or several of your favorite nonprofits. If you want to make a difference in the lives of students, you can establish a scholarship fund. You can also donate unrestricted gifts, known as Community Funds, which provide the most flexibility to address emerging needs in our community – now and in the future.



Legacy Society

The Legacy Society recognizes individuals who have made plans to leave a gift to the community in partnership with the Foundation.

We gratefully acknowledge all those who have plans to leave a legacy to the community through the Foundation. Please talk with your professional advisors and us to find out how easy it is to leave a lasting impression on what matters to you.

We appreciate the compassion, generosity and foresight of our Legacy Society members*:

Larry and Cindy Acker

Jeff and Kathy Bielek

Terry D. Blough

Robert M. and Sheila Bricker

Carol and David M. Briggs

James H. and Yvonne A. Brown

Susan Daly Buchwalter

Maribeth Burns

Delores Durbin

Karen Boyer Ferrara

Mike and Sharon Flinner

Don and Nadine Foster

Max Friedman

Stefan and Melanie Garcia

Carol Gates

Jean P. Gates

Paul D. Gerlaugh

Lana and Jim Gesler

Richard E. and Rilla E. Herald

Ron and Julie Hovanec

Wyn E. Jones

Judith M. Kastelan

John W. and Cheryl M.
Kirkbride

Linda R. Kline

Robert B. Landis

J. Eugene and Donna
Devore Lowe

Steve and Chris Matthew

Mimi Freedlander McCain

Calvin and Beverly McCoy

Lynn R. Moomaw

Brenda Blaney Myers

C. Burwell Myers, Jr.

Sara L. Patton

Lemoine W. Peart

Deborah Rauschenberg

Candace K. and Ferenc M. Relle, Jr.

Thomas A. Romich

Stephen L. and Cheryl F. Shapiro

Karen and Ed Sims

Mark and Irene Weaver

** Five members preferred to remain anonymous*



Wayne County
COMMUNITY
FOUNDATION



Your Gift. Your Impact.

Start a fund today and support the causes you care about most.

Since 1978, we've partnered with individuals, families, businesses, and nonprofits in Wayne County to establish charitable funds that will support their philanthropic passions today, tomorrow, and forever.

With a variety of charitable fund types, Wayne County Community Foundation has a solution to fulfill nearly every donor's charitable wishes.

We suggest getting started by meeting with our staff to discuss the fund options that best fit your charitable goals.

LET'S CONNECT.

Contact us to learn more about the ways we can help you have a positive impact on the community and causes you care about most.

✉ contact@wccfoh.org

☎ 330.262.3877

🌐 www.wccfoh.org



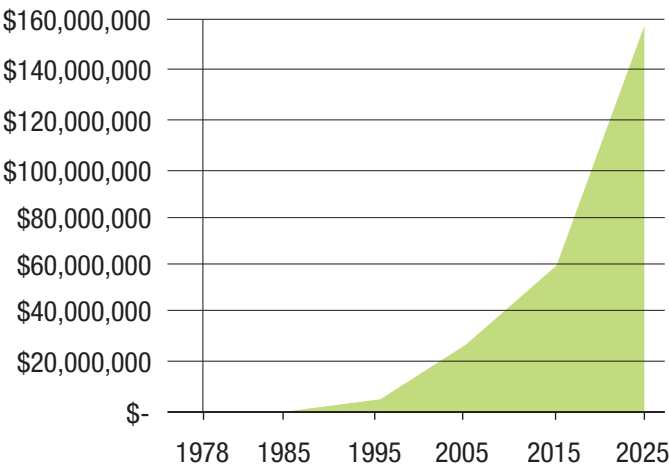
Financial Stewardship



At Wayne County Community Foundation, we are dedicated to nurturing and expanding the philanthropic resources that strengthen our community. By practicing prudent and responsible financial management, we ensure that we can address immediate needs while also securing and growing our assets for the future.

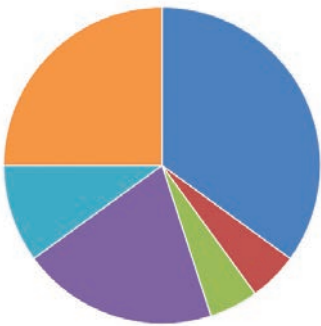
Our investment strategy is designed to safeguard and enhance the value of every donor’s gift, building a solid foundation for long-term impact while meeting today’s community needs. We achieve these goals through a carefully diversified investment portfolio, managed with expertise by both our investment committee and a seasoned professional investment management firm. Your generous support helps us make a lasting difference now and for generations to come.

Assets Since Inception



Asset Allocation

- U.S. Large Cap Equities 35%
- U.S. Mid Cap Equities 5%
- U.S. Small Cap Equities 5%
- International Equities 20%
- Alternatives 10%
- Fixed Income and Cash 25%



Investment Performance as of June 30, 2025

(net of all investment and banking fees)

YEAR	RETURN
1	12.6%
5	8.6%
10	6.7%

2024-2025 INVESTMENT COMMITTEE

- Adam Briggs, Chair
- Marlene Barkheimer
- Mike Jarrett
- Roger Proper
- Brent Steiner
- Ron Holtman, Emeritus

ACCOUNTING FIRM

Meaden & Moore Ltd.

AUDITOR

Rea & Associates, Inc.

INVESTMENT CONSULTANTS

Clearstead Advisors, LLC

CUSTODIAL MANAGERS

The Commercial & Savings Bank
Fidelity Investments

To view our Audited Financial Statements, scan the QR code or visit us online at www.wccfoh.org.



Board of Trustees

for Fiscal Year Ended June 30, 2025



Brent R. Steiner
President



Deanna Troutman
Vice President



Adam A. Briggs
Secretary



Marlene Barkheimer
Treasurer



Michael D. Agnoni
Doylestown/Rittman



Mark A. Auble
Orrville



Scott Boyes
Wooster



Maribeth Burns
Wooster



W. Michael Jarrett
Orrville



Cheryl Kirkbride
Orrville



Glenda Lehman Ervin
SE Quarter



Lynn Moomaw
At Large – East



Dr. Cyril Ofori
Wooster



Roger D. Proper, Jr.
Wooster



William J. Robertson
Doylestown/Rittman



Cindy Vaughn
Doylestown/Rittman

Trustees Emeriti



Ronald E. Holtman



Steve Matthew



Mary Alice Streeter



Howard J. Wenger

Staff



Melanie Reusser Garcia
Executive Director



Lacie M. Neal
Program Manager



Barb Slabaugh
Office and Accounting Manager



Emily Speelman
Administrative Assistant



At Wayne County Community Foundation, we are incredibly grateful for our community. If not for each of you, we would not be able to do the work that we do each and every day.

For a list of our generous donors, scan the QR code or visit us online at www.wccfoh.org.





Wayne County
COMMUNITY FOUNDATION

517 North Market Street, Wooster, OH 44691

330.262.3877 | contact@wccfoh.org
www.wccfoh.org

Nonprofit
U.S. Postage
PAID
Permit #0107
Wooster, OH

When individuals, families, businesses and nonprofits
support their passions, Wayne County thrives.
Join us in making an impact!



The Wayne County Community Foundation is recognized for having
organizational and financial practices that are in compliance with
National Standards for U.S. Community Foundations.